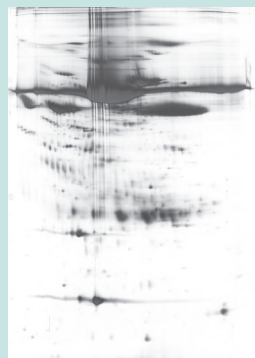


Proteome Analysis by Extreme High Resolution 2D Electrophoresis

Suitable for samples with physiological relevance

- Target identification
- Biomarker identification
- Surrogate marker identification
- Differential protein pattern analysis
- Drug mechanism of action
- Predictive toxicology



CSF w/o abundant protein depletion

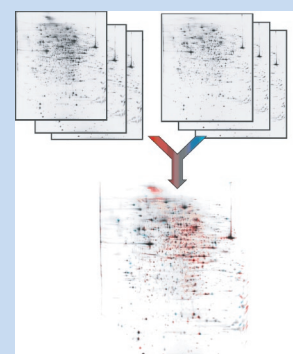


CSF with abundant protein depletion

Proteomics 2D pilot study for plasma, serum and CSF

Six samples - 3 x control vs. 3 x modified / diseased sample

- Including**
- sample preparation
 - depletion of high abundant serum proteins
 - 6x extreme high resolution 2D electrophoresis (23 x 30 cm)
 - MS compatible silver / fluorescent staining
 - differential 2DE image analysis
 - result report of differential protein spots



Special Price: 3450 EURO

[on request (optional): protein identification]

Sample requirements for plasma, serum and CSF

- >2.5-5 ml CSF / > 50 µl serum or plasma

CONTACT YOUR PROTEOMICS SPECIALIST AT:

service@proteomefactory.com